

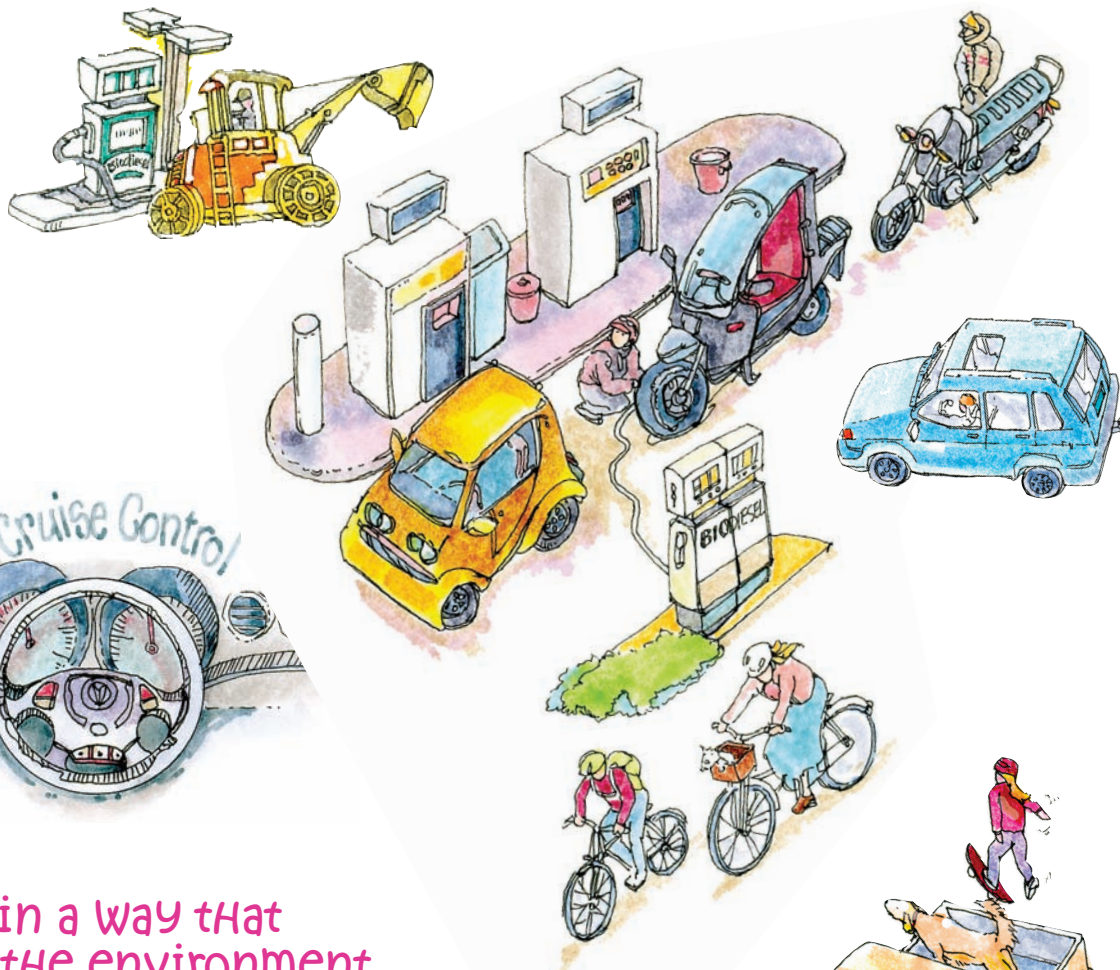
Wanda wonders How Driving Habits affect the environment.

THE **EARTH 1st** WALKER INDUSTRIES **Environmental Messenger** Reduce Our Impact

Drive with care

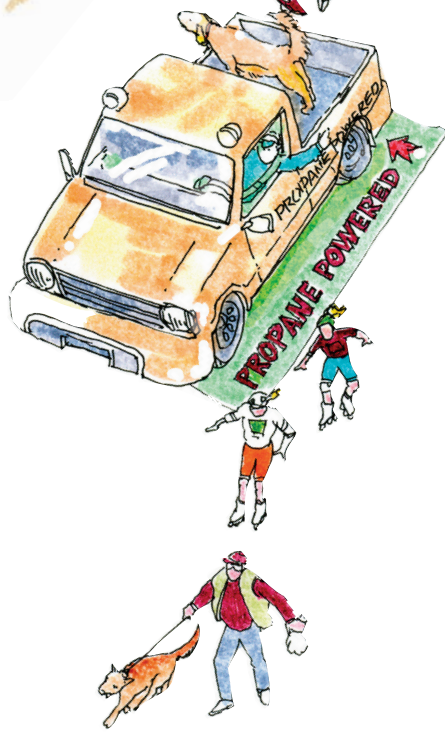


THE WAY YOU DRIVE YOUR VEHICLE WILL AFFECT THE ENVIRONMENT!



Drive in a way that supports the environment.

- Car pool.
- When buying a car, make fuel efficiency an important factor in your decision.
- Drive at the posted speed limit. It will reduce your fuel consumption, reduce air emissions and save you money.
- Avoid quick starts and stops. This increases your fuel consumption and releases more contaminants into the air.
- Using cruise control on the highway will not only make your ride smoother, it will help to reduce fuel consumption.
- Ensure your vehicle is aerodynamic, remove roof racks etc. from your vehicle when they are not being used.
- Light vehicles use less fuel. Remove any unnecessary items from your trunk/storage areas.
- The use of air conditioners has an impact on your fuel use. When in slow rush hour traffic open your windows to cool down.
- On the highway open windows affect fuel consumption by making your car work harder.



Questions

- How could you change your driving habits to better support the environment?
- What are the benefits of driving in a way that supports the environment?
- What other transportation could you use to support the environment?
- What opportunities do you have for car pooling?

Of course by not driving you best support the environment.  
 ■ Can you walk, cycle or take public transit?

Remember to plan your trips and errands to minimize the use of your vehicle and conserve fuel!

*Tug on anything at all and you'll find it connected to everything else in the universe.*  
 John Muir



commit ■ create ■ participate

www.walkerind.com

© Walker Industries Holdings Limited, 2006