

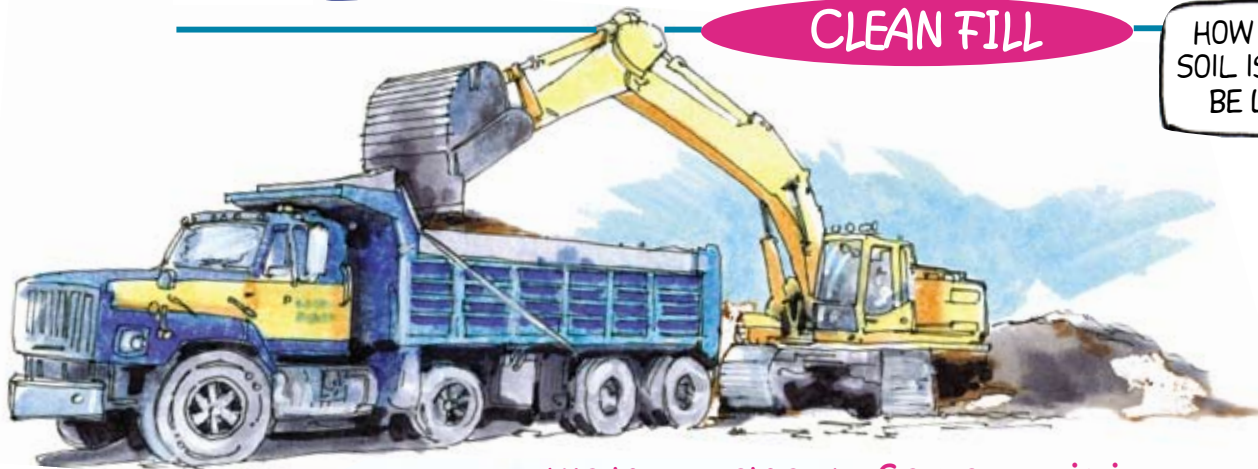
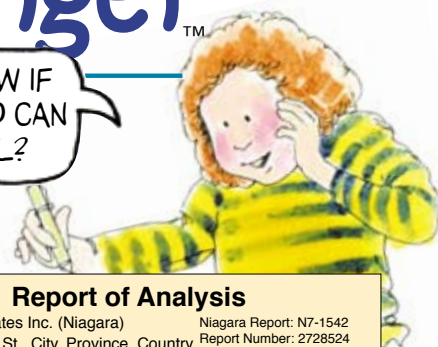
Wanda wonders about Clean fill.



Reduce Our Impact Environmental Messenger™

CLEAN FILL

HOW DO YOU KNOW IF SOIL IS CLEAN AND CAN BE USED AS FILL?



THE management of excess soil in Ontario is governed by Ontario Regulation 347 – General Waste Management.

Report of Analysis				
Client: ABC Associates Inc. (Niagara)		Niagara Report: N7-1542		
123 Address St., City, Province, Country		Report Number: 2728524		
Postal Code		Date Reported: 2007-12-13		
Attn: Ms. A. B. Smith		Date Submitted: 2007-12-06		
Project: Bowen Rd Fort Erie				
LAB Sample #123456		Client Sample ID: GSI		
Volatile Organic Compounds in ZHE Leachate Extract				
Parameter	Result	MRL	UNIT	LOC
1,1-dichloroethylene	<0.5	0.5	ug/L	1400
1,2-dichlorobenzene	<0.4	0.4	ug/L	20000
1,2-dichloroethane	<0.5	0.5	ug/L	500
1,4-dichlorobenzene	<0.4	0.4	ug/L	500
Benzene	<0.5	0.5	ug/L	500
Carbon Tetrachloride	<0.5	0.5	ug/L	500
Chloroform	<0.5	0.5	ug/L	10000
Dichloromethane	<4.0	4.0	ug/L	50000
Methyl Ethyl Ketone (MEK)	<20	20	ug/L	200000
Monochlorobenzene	<0.2	0.2	ug/L	8000
Tetrachloroethylene	<0.3	0.3	ug/L	3000
Trichloroethylene	<0.3	0.3	ug/L	5000
Vinyl Chloride	<0.2	0.2	ug/L	200



It defines "inert fill" as earth or rock fill that contains no putrescible materials or soluble or decomposable chemical substances. Putrescible material is anything that will rot or decompose. So if there are leaves, food or other organic material that could rot, the soil would not be considered inert and therefore could not be used as clean fill.



The material must not contain any decomposable chemical substances. The Ministry of the Environment and the Ministry of Natural Resources both use Table 1, Full Depth Background Site Condition Standards, from the "Soil, Ground Water and Sediment Standards for Use Under Part XV.1 of the Environmental Protection Act" to assess whether material contains decomposable chemical substances.

Soil samples must be taken and analyzed and the results of that analysis compared to the standards in Table 1.

- If you are going to use soil as fill, it is important to know:
- where it came from
 - the existing and former land-uses of the property
 - the reason it is being removed
 - if the quality of the soil meets Table 1

Questions

- Does your facility receive clean fill?
- If so, what are your procedures for ensuring it is acceptable for receipt?
- Who is responsible for reviewing the quality of the material?
- What records do you keep about the material as it is received?
- What are the risks of not assessing fill quality before receipt?

Your Aggregate Resources Act license may restrict the import of fill and your local municipality may have approval requirements you need to meet.

It is important to monitor the material as it is received to ensure it is consistent with what was approved for receipt.

Keep records of where the material came from and where it is deposited.

You must be the change you wish to see in the world.
Mahatma Gandhi



commit ■ create ■ participate

www.walkerind.com